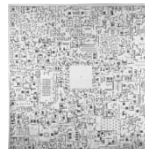


# “WHAT’S A HOUSE?”

## Housing Design Strategies, Today



Ray and Charles Eames, “What’s a house?”,  
in *Art and Architecture*. July 1944.



# “WHAT’S A HOUSE?”

Housing Design Strategies, Today

## The Indeterminacy of the Floor Plan

Expanding the Limits of the Interior

Dual Access

Multiple Thresholds

*The House With  
Equal-sized  
Rooms, Xavier  
Monteys*

Removing Corridors

Maximising  
Indeterminacy

Making Visible the Community

## The Challenge of Privacy in Collective Housing

Creating Gathering Networks

De-Hierarchizing the Floor  
Plan

Splitting Up the  
Shared Program

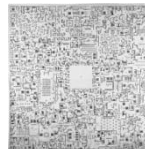
Diversifying Circulation

Functional  
Ambiguity

Built-In Flexibility

Fostering Conviviality

## The Communality of the Floor Plan



PROJETO V FA\_Ulisboa

22|09|25

Cornellà Housing, Cornellà de Llobregat, Barcelona, Spain [2017-2020]

Peris + Toral Arquitectes

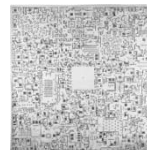
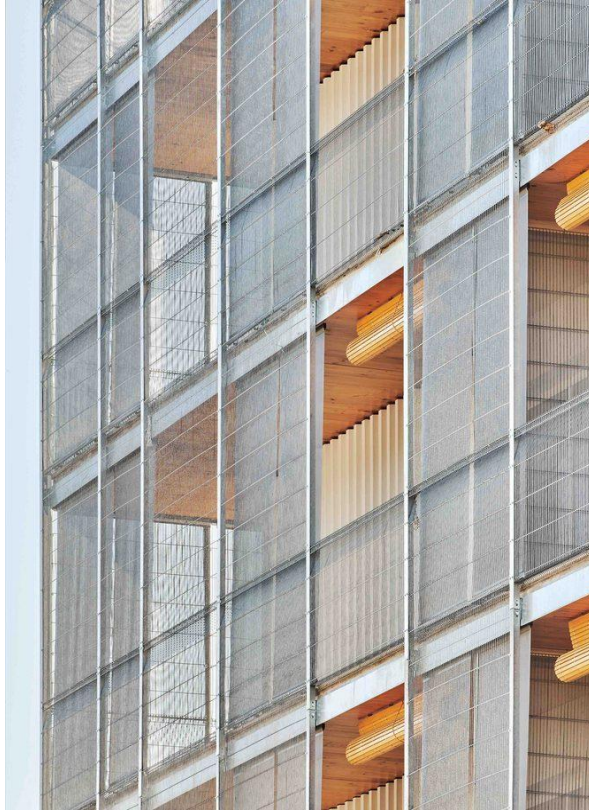
Non-Hierarchical Floor Plan

*The House With Equal-sized Rooms* (Xavier Monteys)

Functional Ambiguity/No Predeterminate Program

Built-In Flexibility

Dual Access



PROJETO V FA\_Ulisboa

22|09|25

Cornellà Housing, Cornellà de Llobregat, Barcelona, Spain [2017-2020]

Peris + Toral Arquitectes

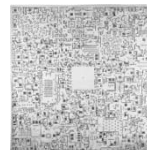
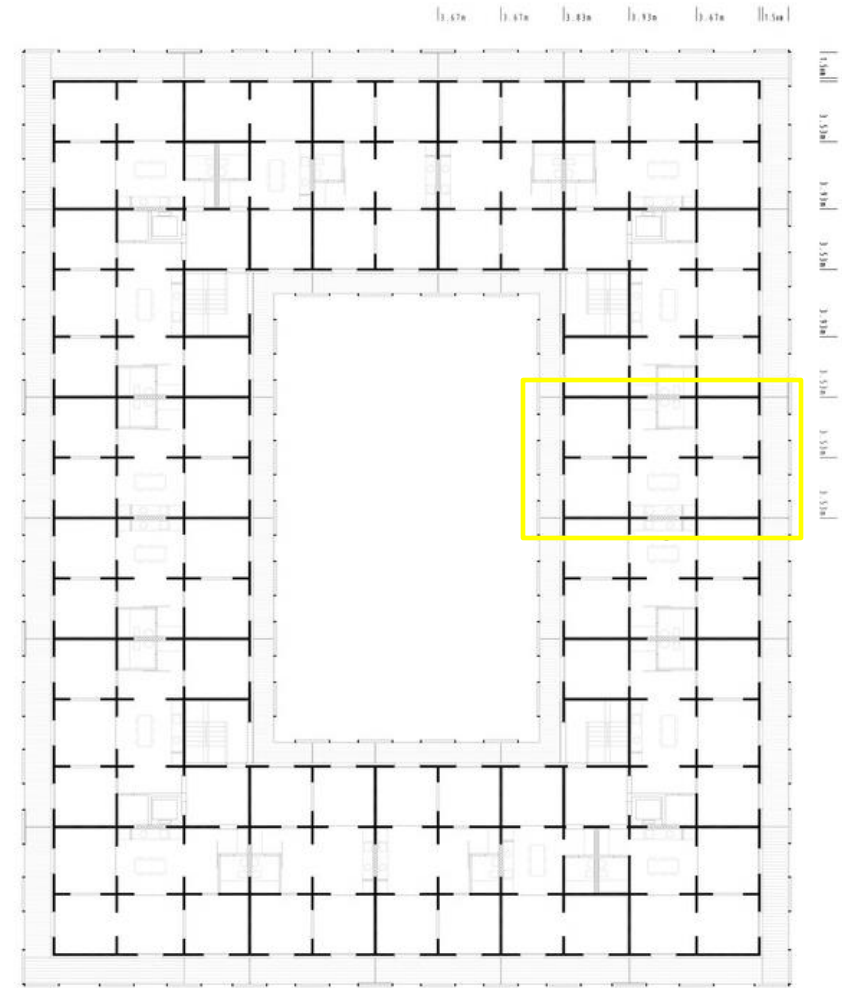
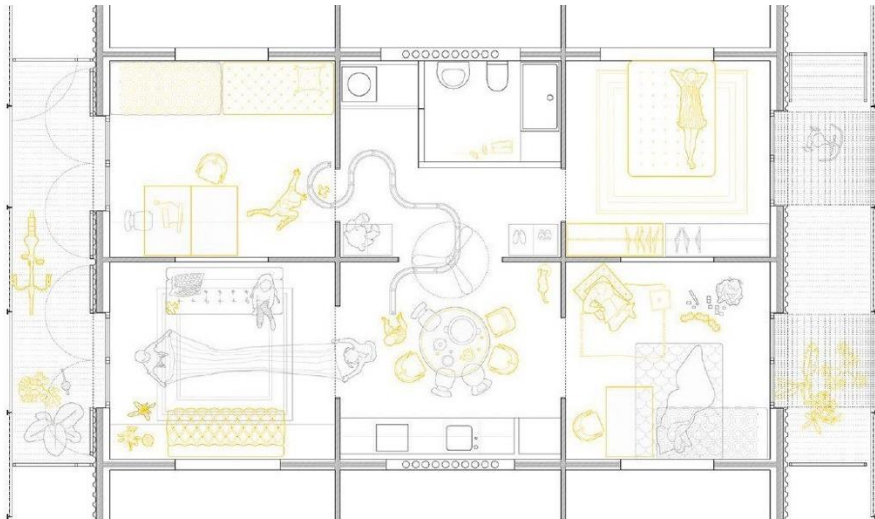
Non-Hierarchical Floor Plan

*The House With Equal-sized Rooms* (Xavier Monteys)

Functional Ambiguity/No Predeterminate Program

Built-In Flexibility

Dual Access



PROJETO V FA\_Ulisboa

22|09|25



Comellà Housing, Cornellà de Llobregat, Barcelona, Spain [2017-2020]

Peris + Toral Arquitectes

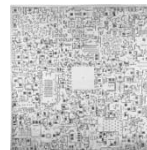
Non-Hierarchical Floor Plan

*The House With Equal-sized Rooms* (Xavier Monteys)

Functional Ambiguity/No Predeterminate Program

Built-In Flexibility

Dual Access



PROJETO V FA\_Ulisboa

22|09|25

Comellà Housing, Cornellà de Llobregat, Barcelona, Spain [2017-2020]

Peris + Toral Arquitectes

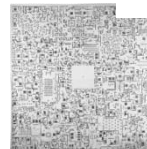
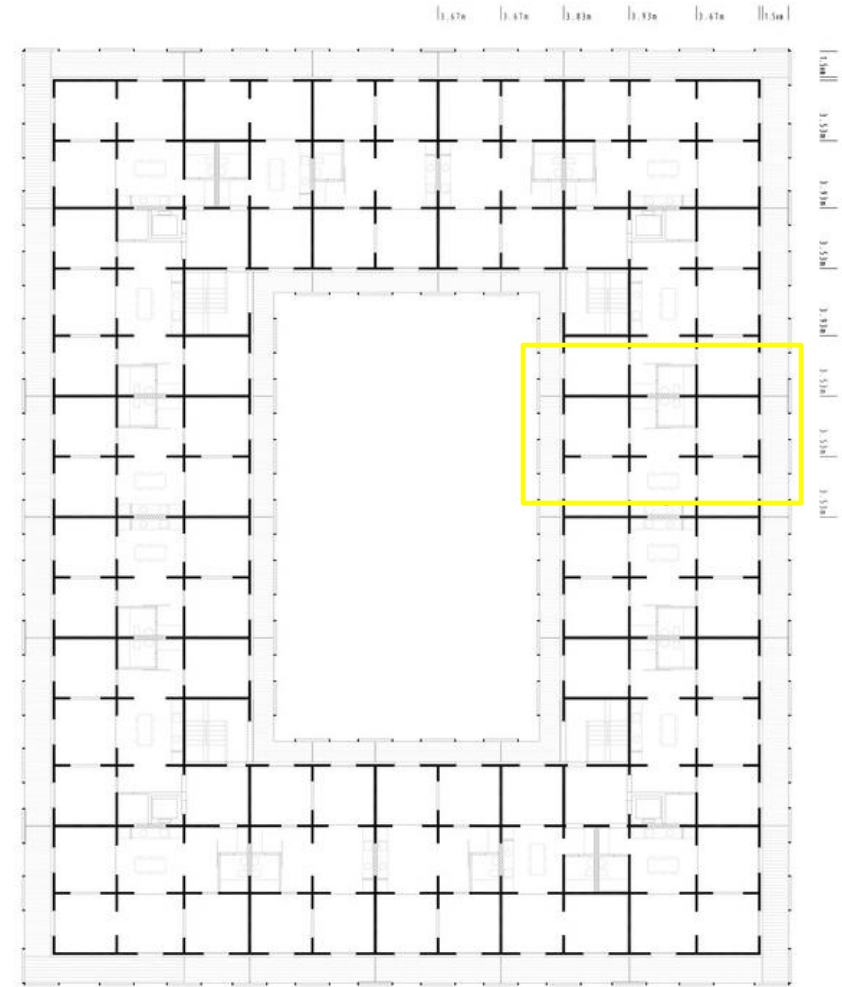
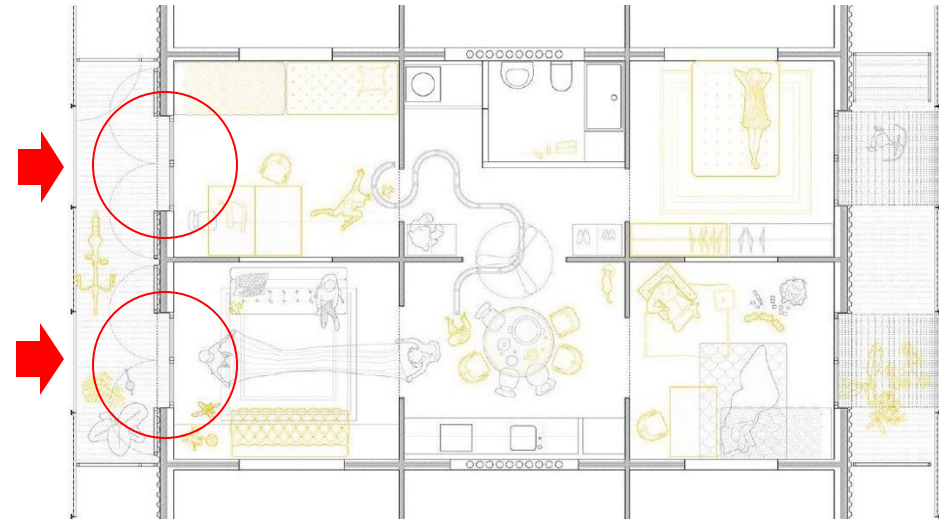
Non-Hierarchical Floor Plan

*The House With Equal-sized Rooms* (Xavier Monteys)

Functional Ambiguity/No Predeterminate Program

Built-In Flexibility

Dual Access



PROJETO V FA\_Ulisboa

22|09|25

43 Social Housing in Ibiza, Ibiza, Spain [2018-2022]

Peris + Toral Arquitectes

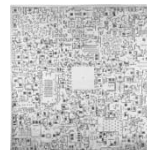
Non-Hierarchical Floor Plan

*The House With Equal-sized Rooms* (Xavier Monteys)

Functional Ambiguity/No Predeterminate Program

Built-In Flexibility

Dual Access



PROJETO V FA\_Ulisboa

22|09|25



43 Social Housing in Ibiza, Ibiza, Spain [2018-2022]

Peris + Toral Arquitectes

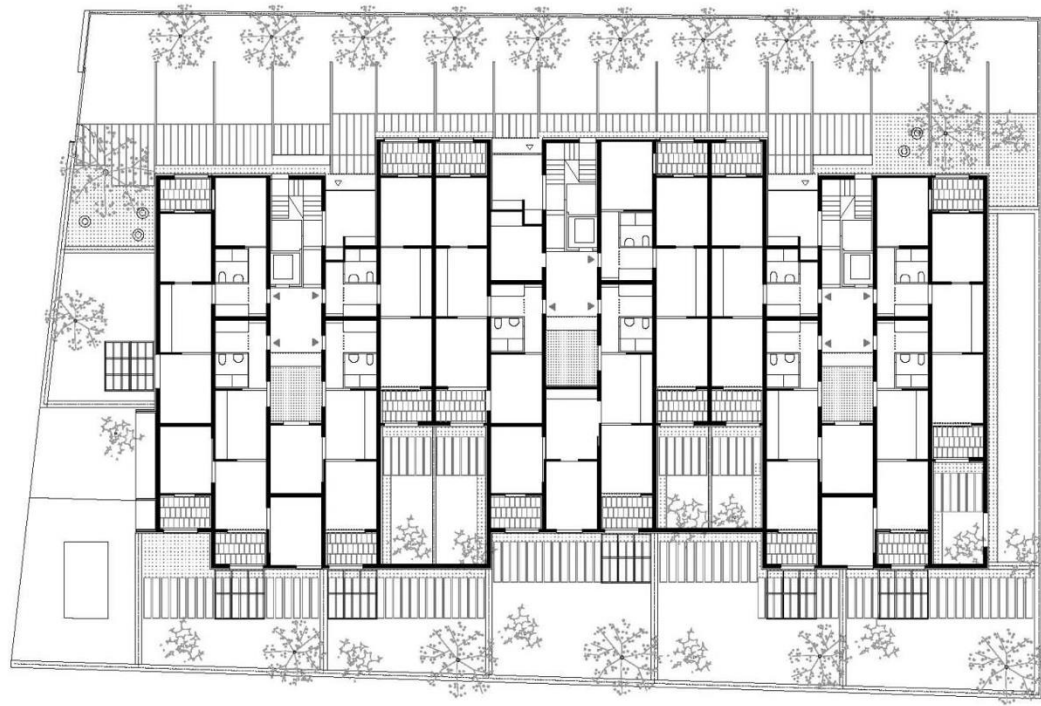
Non-Hierarchical Floor Plan

*The House With Equal-sized Rooms* (Xavier Monteys)

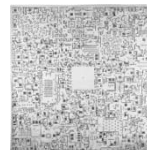
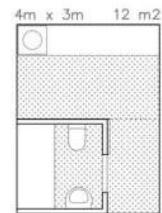
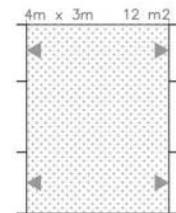
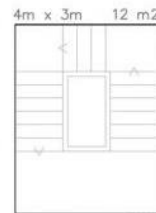
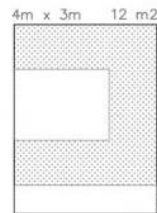
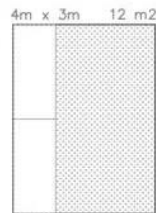
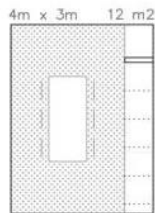
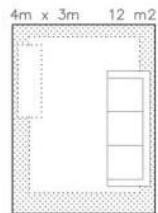
Functional Ambiguity/No Predeterminate Program

Built-In Flexibility

Dual Access



0 5 30 E 1/300 PLANTA BAJA



PROJETO V FA\_Ulisboa

22|09|25



43 Social Housing in Ibiza, Ibiza, Spain [2018-2022]

Peris + Toral Arquitectes

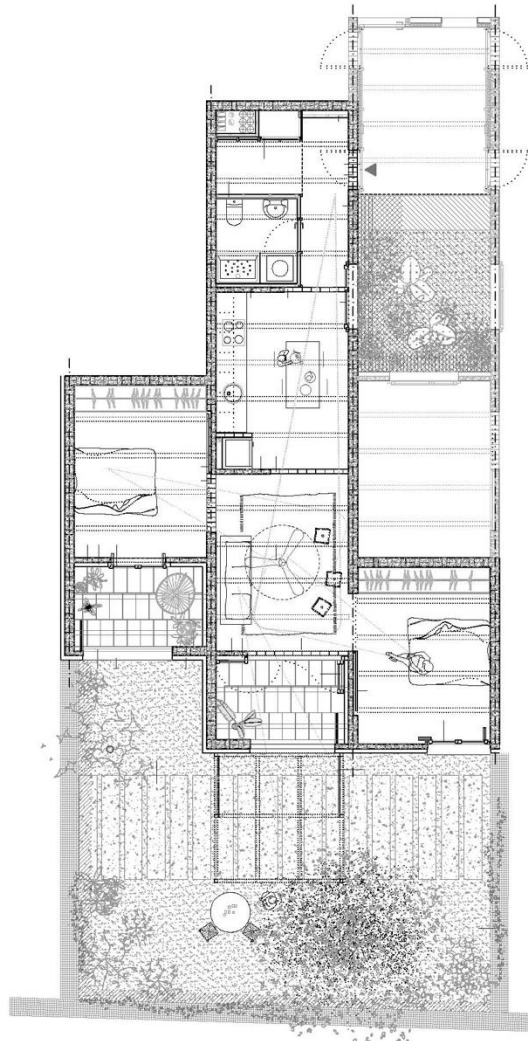
Non-Hierarchical Floor Plan

*The House With Equal-sized Rooms* (Xavier Monteys)

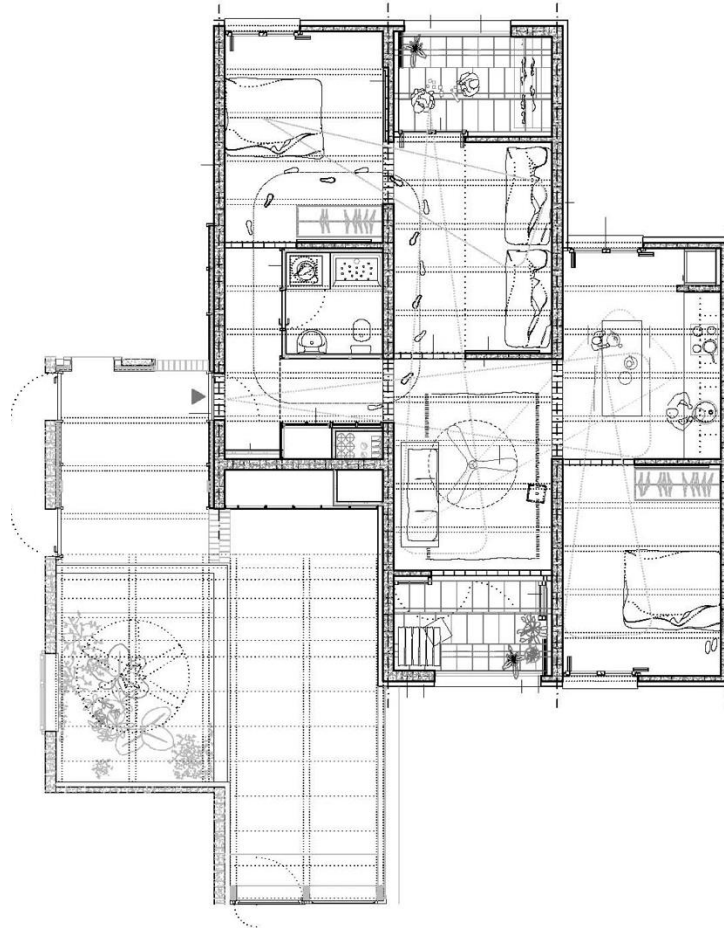
Functional Ambiguity/No Predeterminate Program

Built-In Flexibility

Dual Access

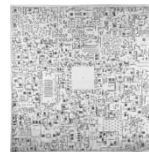


VIVIENDA PB  
ESCALERA A  
PB 2a



0 1 4

VIVIENDA ATRIO  
ESCALERA A  
3a 3a



PROJETO V FA\_Ulissboa

22|09|25

43 Social Housing in Ibiza, Ibiza, Spain [2018-2022]

Peris + Toral Arquitectes

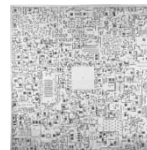
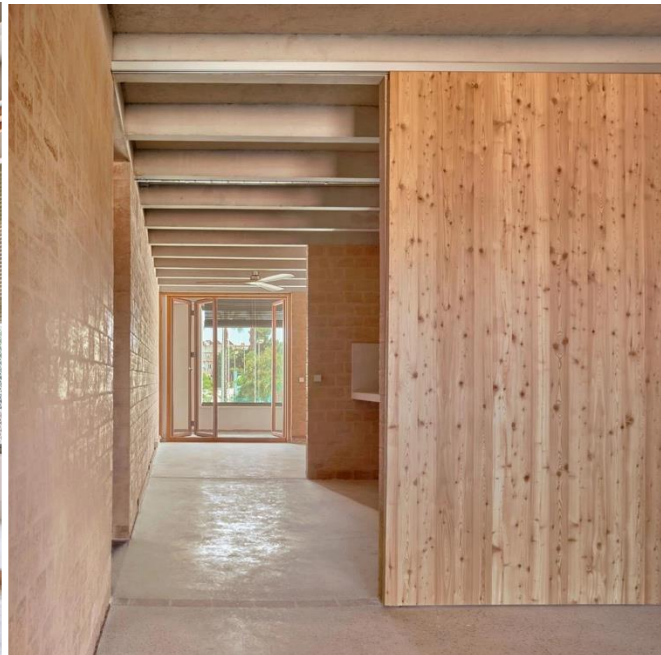
Non-Hierarchical Floor Plan

*The House With Equal-sized Rooms* (Xavier Montey's)

Functional Ambiguity/No Predeterminate Program

Built-In Flexibility

Dual Access



PROJETO V FA\_Ulisboa

22|09|25



110 Rooms, Barcelona, Spain [2016]

Maio

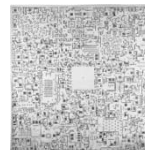
Non-Hierarchical Floor Plan

*The House With Equal-sized Rooms* (Xavier Monteys)

Functional Ambiguity/No Predeterminate Program

Built-In Flexibility

Dual Access



PROJETO V FA\_Ulisboa

22|09|25



110 Rooms, Barcelona, Spain [2016]

Maio

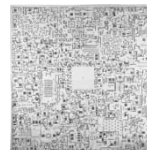
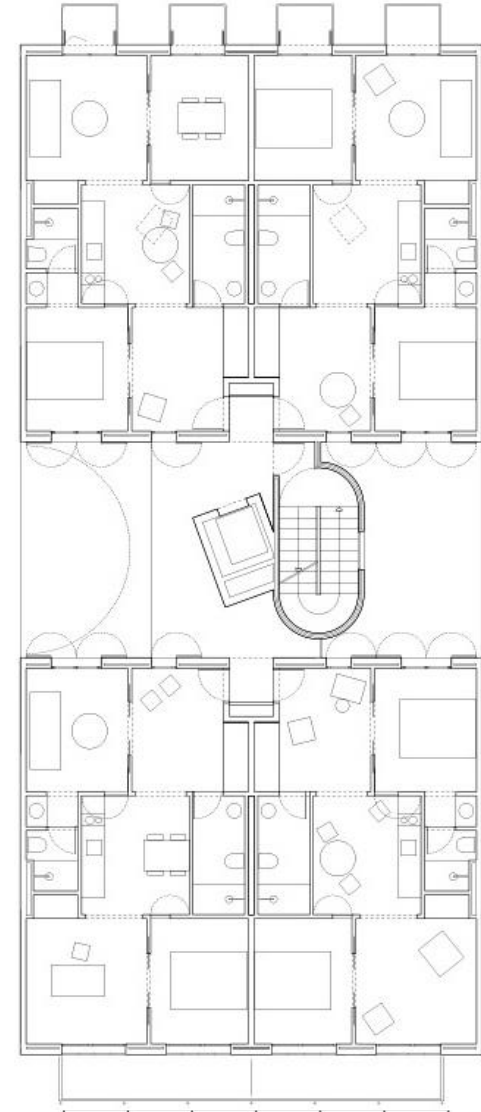
Non-Hierarchical Floor Plan

*The House With Equal-sized Rooms* (Xavier Montejó)

Functional Ambiguity/No Predeterminate Program

Built-In Flexibility

Dual Access



PROJETO V FA\_Ulisboa

22|09|25

110 Rooms, Barcelona, Spain [2016]

Maio

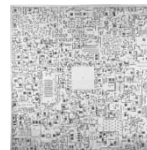
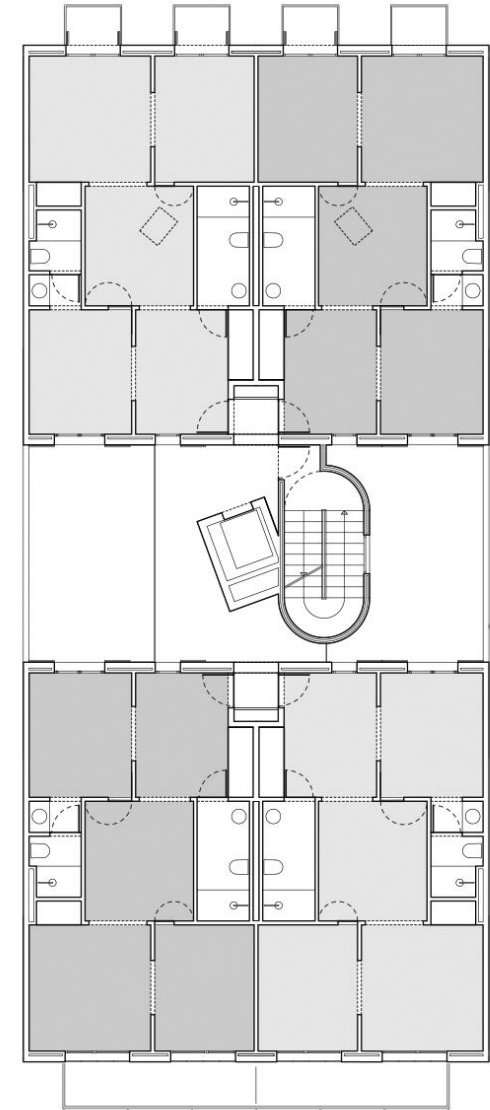
Non-Hierarchical Floor Plan

*The House With Equal-sized Rooms* (Xavier Monteys)

Functional Ambiguity/No Predeterminate Program

Built-In Flexibility

Dual Access

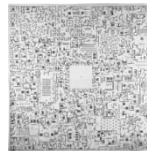


PROJETO V FA\_Ulisboa

22|09|25

Social Housing 1737, Gavà, Barcelona, Spain [2017-2022]  
H Arquitectes

Non-Hierarchical Floor Plan  
*The House With Equal-sized Rooms* (Xavier Monteys)  
Functional Ambiguity/No Predeterminate Program  
Built-In Flexibility  
Dual Access

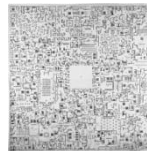
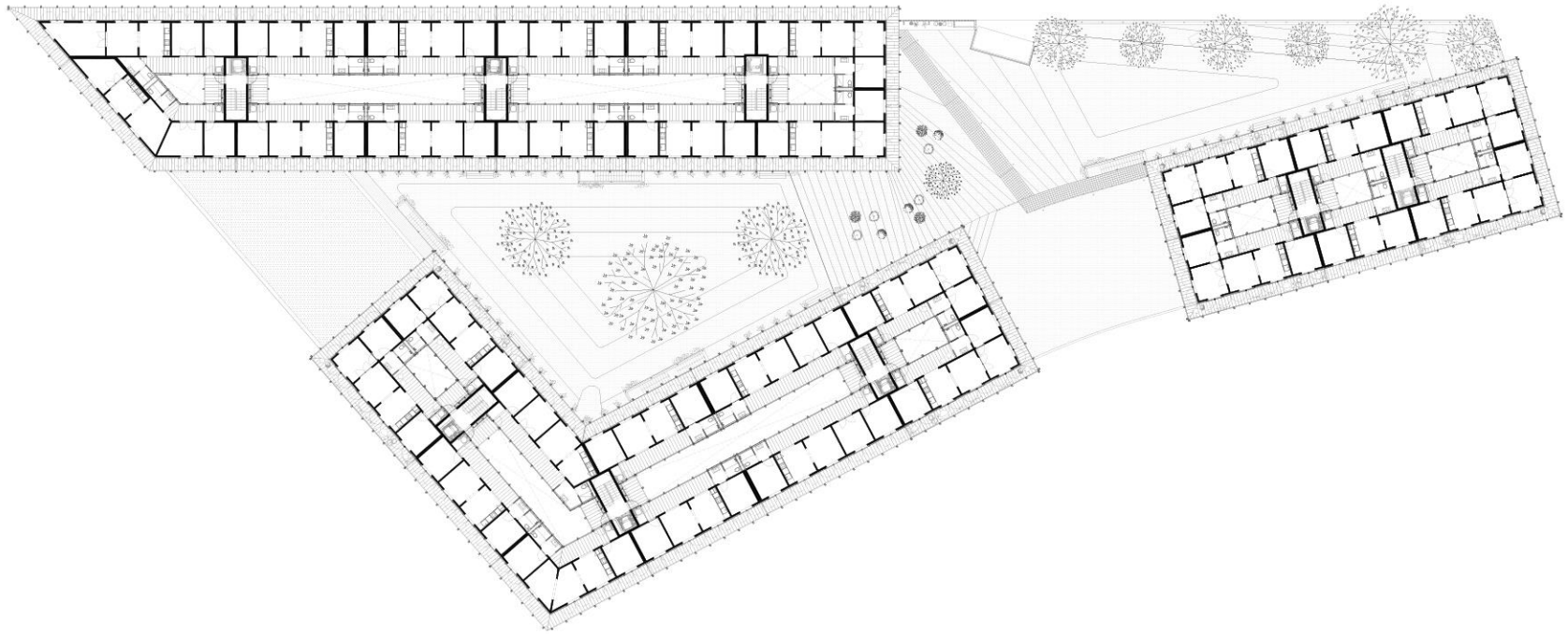


PROJETO V FA\_Ulisboa  
22|09|25



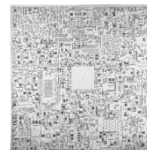
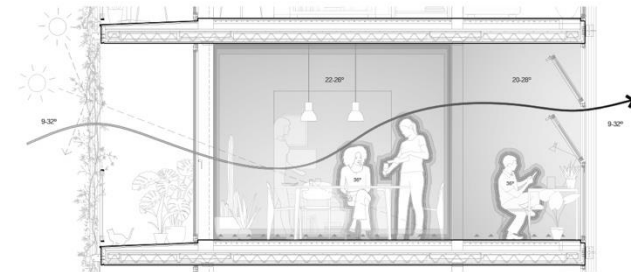
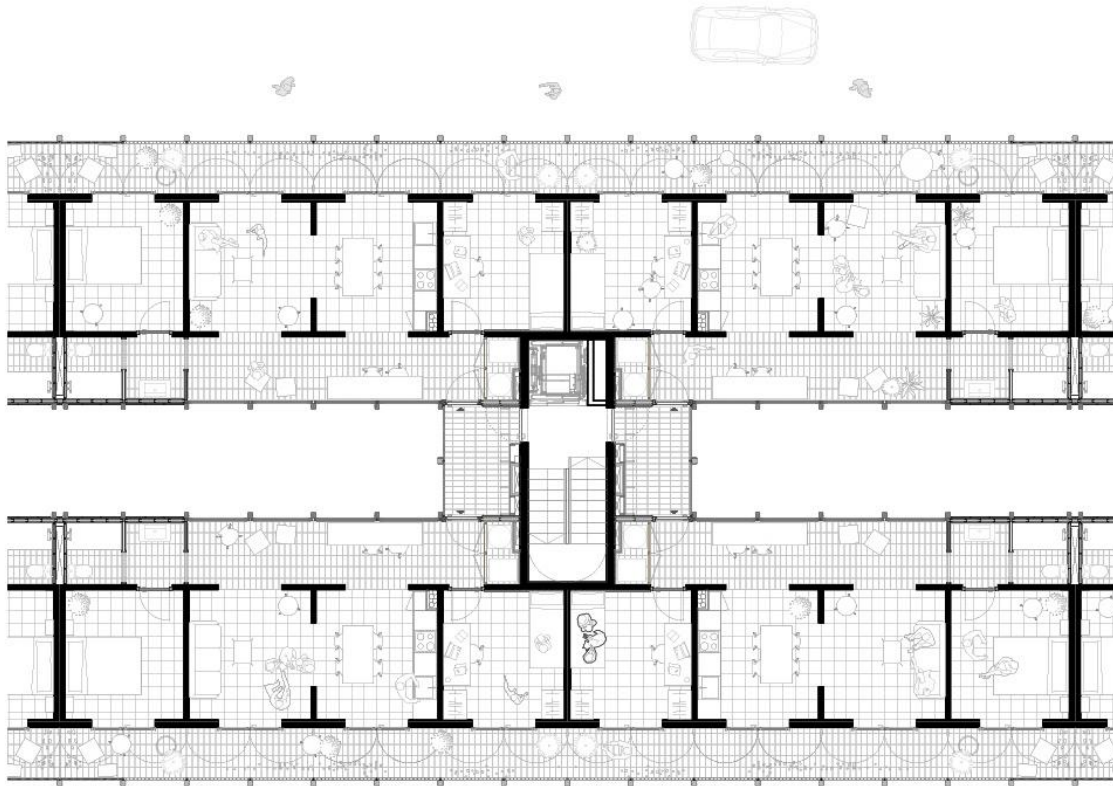
Social Housing 1737, Gavà, Barcelona, Spain [2017-2022]  
H Arquitectes

Non-Hierarchical Floor Plan  
*The House With Equal-sized Rooms* (Xavier Monteys)  
Functional Ambiguity/No Predeterminate Program  
Built-In Flexibility  
Dual Access



Social Housing 1737, Gavà, Barcelona, Spain [2017-2022]  
H Arquitectes

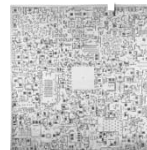
Non-Hierarchical Floor Plan  
*The House With Equal-sized Rooms* (Xavier Montejos)  
Functional Ambiguity/No Predeterminate Program  
Built-In Flexibility  
Dual Access



PROJETO V FA\_Ulisboa  
22|09|25

Social Housing 1737, Gavà, Barcelona, Spain [2017-2022]  
H Arquitectes

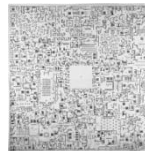
Non-Hierarchical Floor Plan  
*The House With Equal-sized Rooms* (Xavier Monteys)  
Functional Ambiguity/No Predeterminate Program  
Built-In Flexibility  
Dual Access





Social Housing 1737, Gavà, Barcelona, Spain [2017-2022]  
H Arquitectes

Non-Hierarchical Floor Plan  
*The House With Equal-sized Rooms* (Xavier Monteys)  
Functional Ambiguity/No Predeterminate Program  
Built-In Flexibility  
Dual Access



PROJETO V FA\_Ulisboa  
22|09|25

Gallaratese, Milan, Italy [1972]

Aldo Rossi

Bloco das Águas Livres Lisbon, Portugal [1956]

Nuno Teotónio Pereira, Bartolomeu Costa Cabral

Multiple Thresholds

Balance Between Privacy and Conviviality

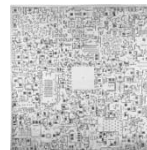
Perceptual Codes

Gradation of Intimacy

Making Visible the Community

Expanding the Limits of the Interior

Diversifying Circulation



PROJETO V FA\_Ulisboa

22|09|25

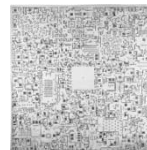
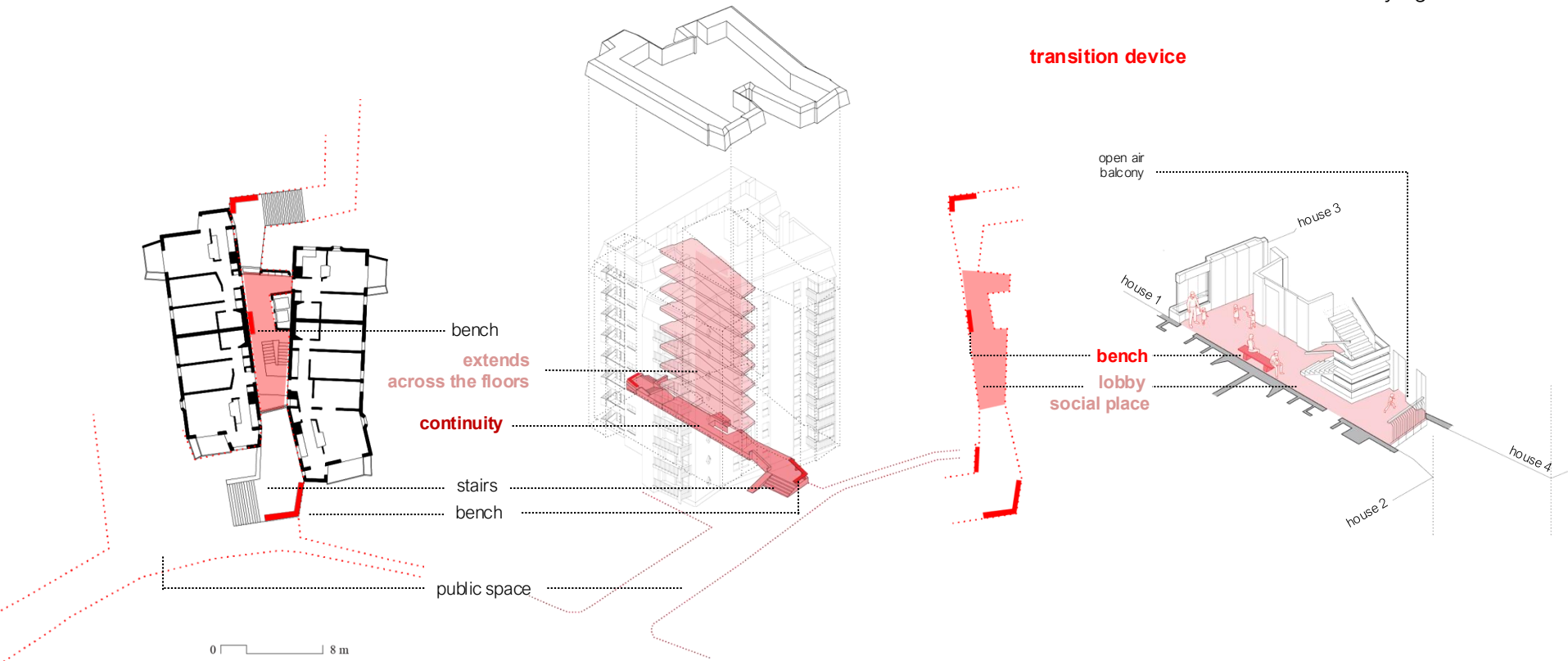


Olivais Tower, Lisbon, Portugal [1958]

António Pinto Freitas, Nuno Portas, Nuno Teotónio Pereira, 1958

(source: João Silva Leite and Youri Spaninks-Amaro)

Multiple Thresholds  
Balance Between Privacy and Conviviality  
Perceptual Codes  
Gradation of Intimacy  
Making Visible the Community  
Expanding the Limits of the Interior  
Diversifying Circulation



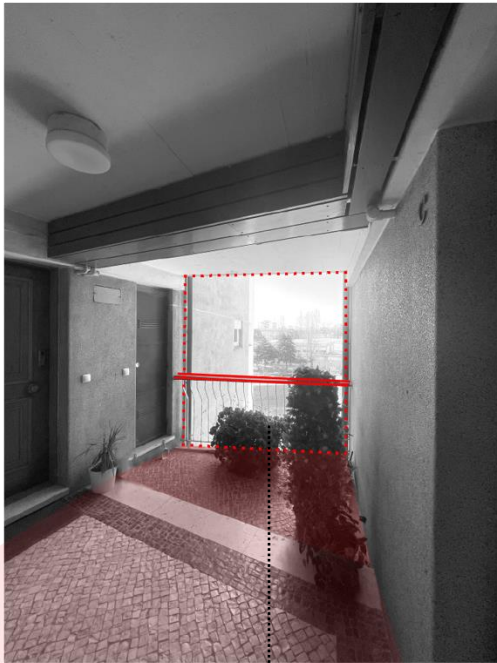


Olivaís Tower, Lisbon, Portugal [1958]

António Pinto Freitas, Nuno Portas, Nuno Teotónio Pereira, 1958

(source: João Silva Leite and Youri Spaninks-Amaro)

Multiple Thresholds  
Balance Between Privacy and Conviviality  
Perceptual Codes  
Gradation of Intimacy  
Making Visible the Community  
Expanding the Limits of the Interior  
Diversifying Circulation



transition device

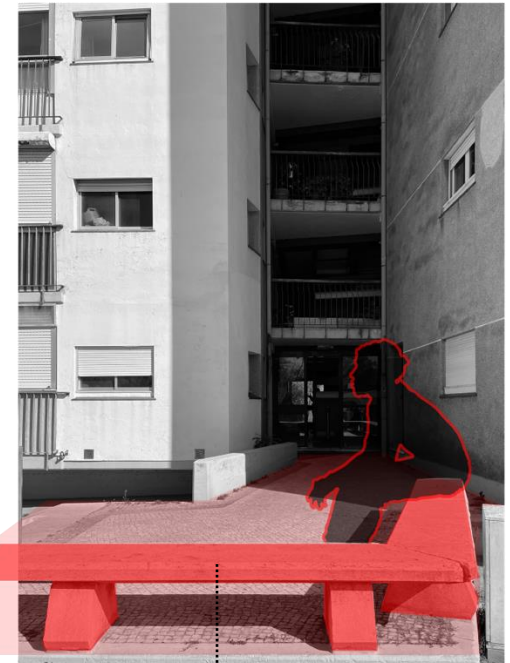
open air  
balcony



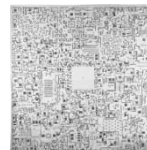
social place

sidewalk  
pavement

bench



public bench

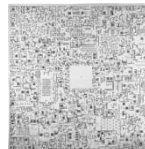


PROJETO V FA\_Ulisboa

22|09|25

42 Social Housing Units, San Servera, Mallorca, Spain [2009-2022]  
Peris + Toral Arquitectes

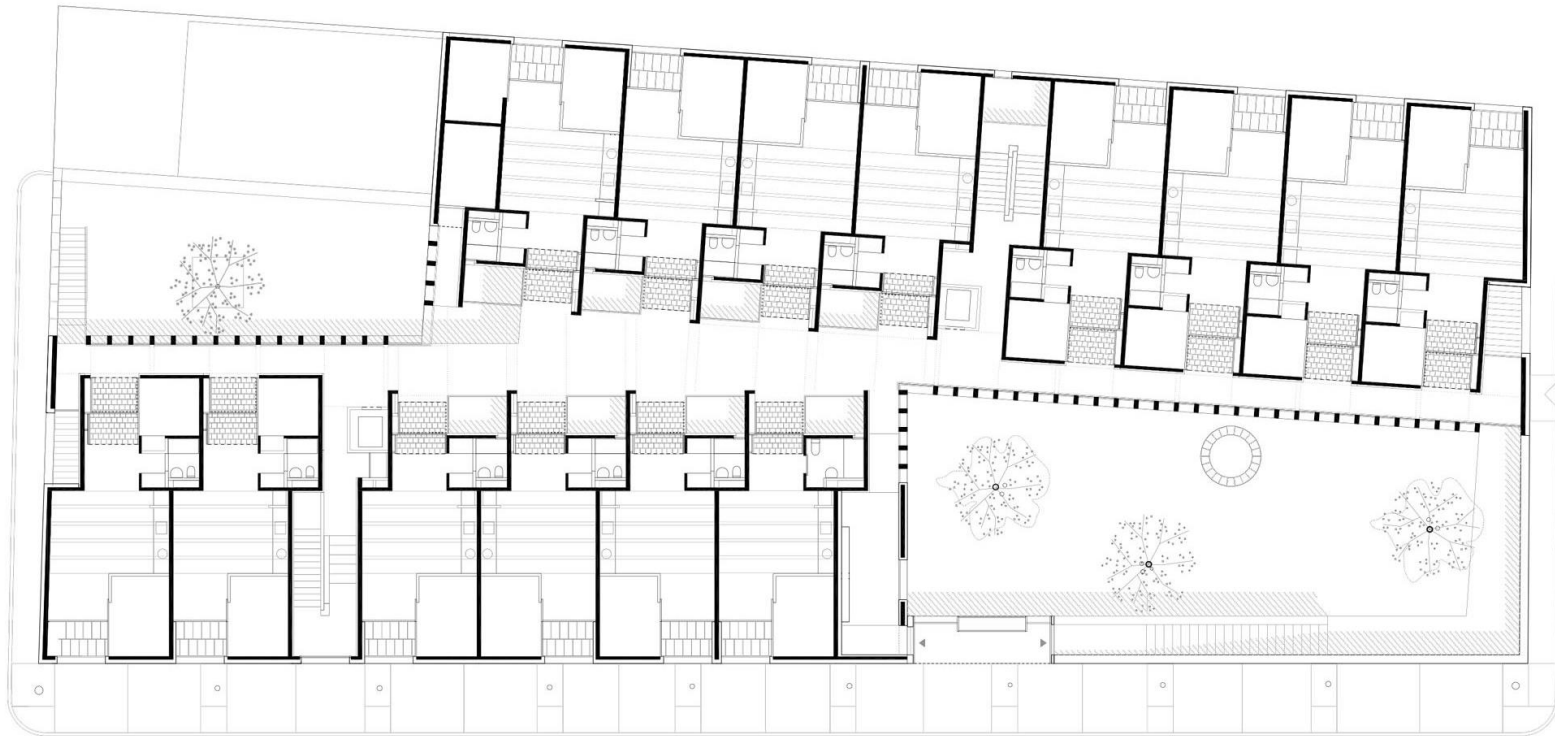
Multiple Thresholds  
Balance Between Privacy and Conviviality  
Perceptual Codes  
Gradation of Intimacy  
Making Visible the Community  
Expanding the Limits of the Interior  
Diversifying Circulation



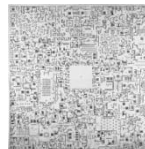
PROJETO V FA\_Ulisboa  
22|09|25

42 Social Housing Units, San Servera, Mallorca, Spain [2009-2022]  
Peris + Toral Arquitectes

Multiple Thresholds  
Balance Between Privacy and Conviviality  
Perceptual Codes  
Gradation of Intimacy  
Making Visible the Community  
Expanding the Limits of the Interior  
Diversifying Circulation



0 4 16



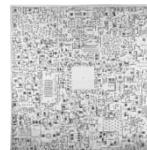
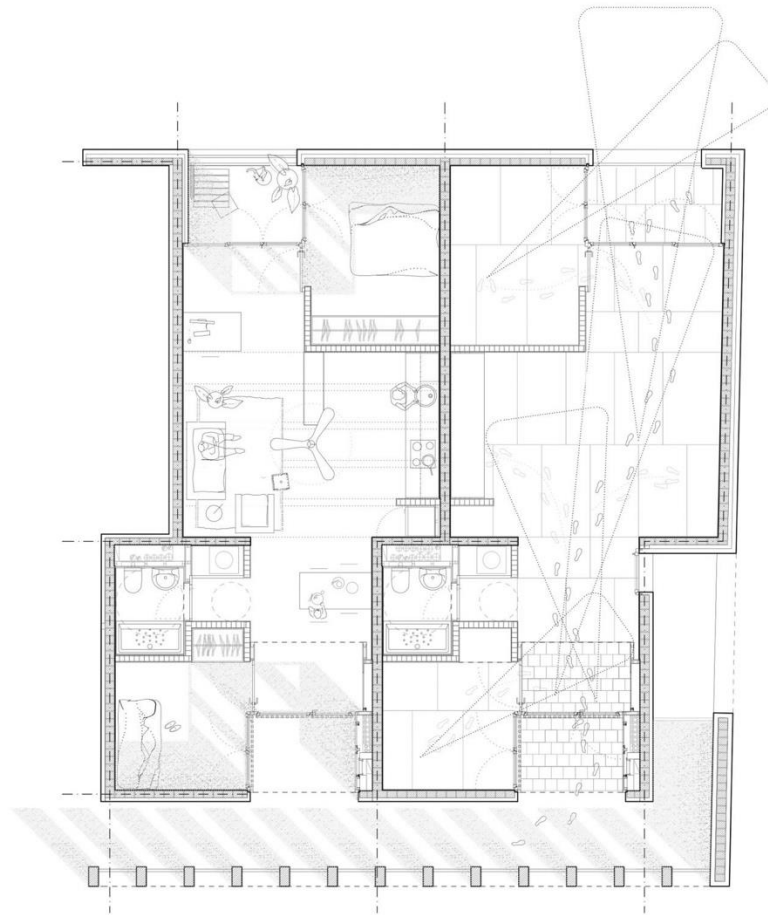
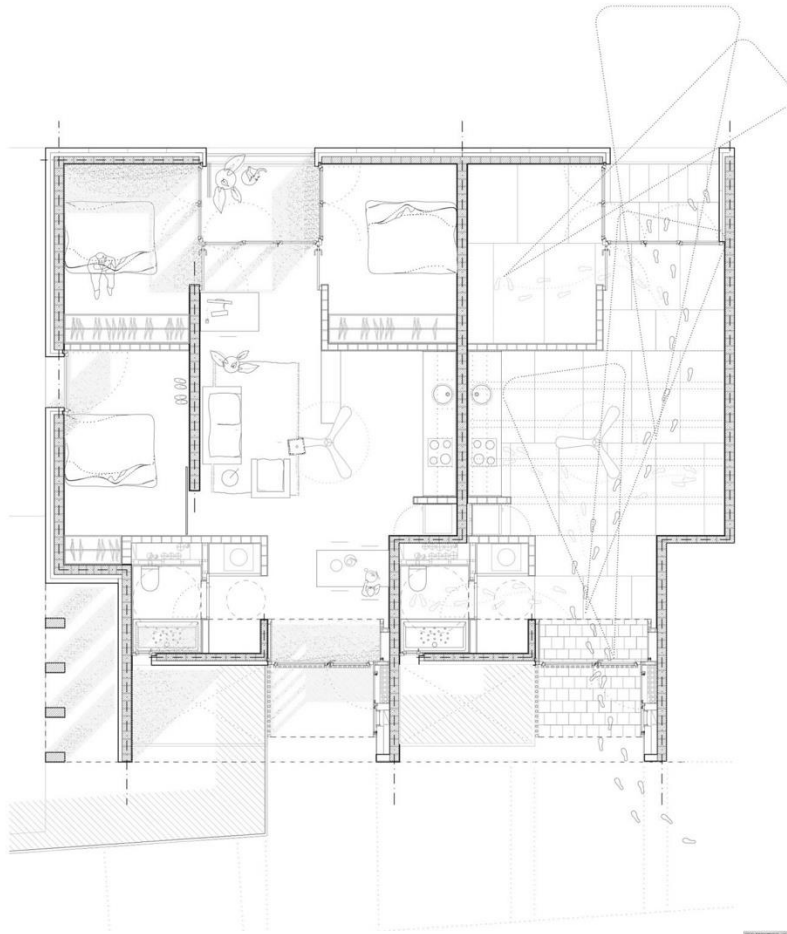
PROJETO V FA\_Ulisboa

22|09|25



42 Social Housing Units, San Servera, Mallorca, Spain [2009-2022]  
Peris + Toral Arquitectes

Multiple Thresholds  
Balance Between Privacy and Conviviality  
Perceptual Codes  
Gradation of Intimacy  
Making Visible the Community  
Expanding the Limits of the Interior  
Diversifying Circulation



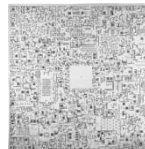
PROJETO V FA\_Ulisboa

22|09|25



42 Social Housing Units, San Servera, Mallorca, Spain [2009-2022]  
Peris + Toral Arquitectes

Multiple Thresholds  
Balance Between Privacy and Conviviality  
Perceptual Codes  
Gradation of Intimacy  
Making Visible the Community  
Expanding the Limits of the Interior  
Diversifying Circulation



PROJETO V FA\_Ulisboa

22|09|25



Spiegelfabrik, Fürth, Germany [2016-2021]

Heide & Von Beckerath

Multiple Thresholds

Balance Between Privacy and Conviviality

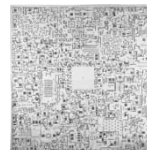
Perceptual Codes

Gradation of Intimacy

Making Visible the Community

Expanding the Limits of the Interior

Diversifying Circulation



PROJETO V FA\_Ulisboa

22|09|25



Spiegelfabrik, Fürth, Germany [2016-2021]

Heide & Von Beckerath

Multiple Thresholds

Balance Between Privacy and Conviviality

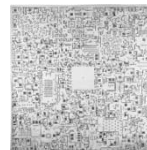
Perceptual Codes

Gradation of Intimacy

Making Visible the Community

Expanding the Limits of the Interior

Diversifying Circulation



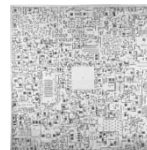
PROJETO V FA\_Ulisboa

22|09|25

San Riemo Cooperative Housing, Munich, Germany [2017-2020]

Arge Summacumfemmer Büro Juliane Greb

Fostering Conviviality  
Splitting Up the Shared Program  
Creating Gathering Networks  
Maximising Indeterminacy  
Removing Corridors  
Sharing the Exterior  
Yielding Privacy



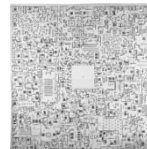
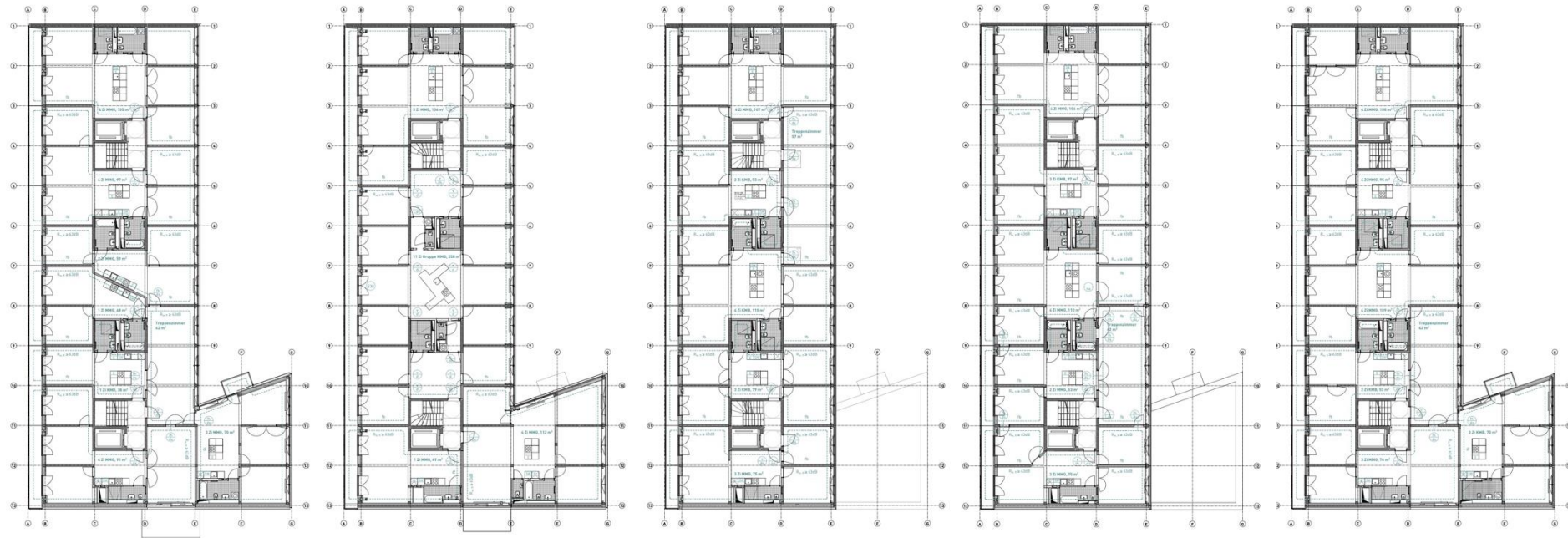
PROJETO V FA\_Ulisboa

22|09|25

San Riemo Cooperative Housing, Munich, Germany [2017-2020]

Arge Summacumfemmer Büro Juliane Greb

Fostering Conviviality  
Splitting Up the Shared Program  
Creating Gathering Networks  
Maximising Indeterminacy  
Removing Corridors  
Sharing the Exterior  
Yielding Privacy



PROJETO V FA\_Ulisboa

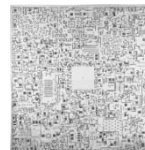
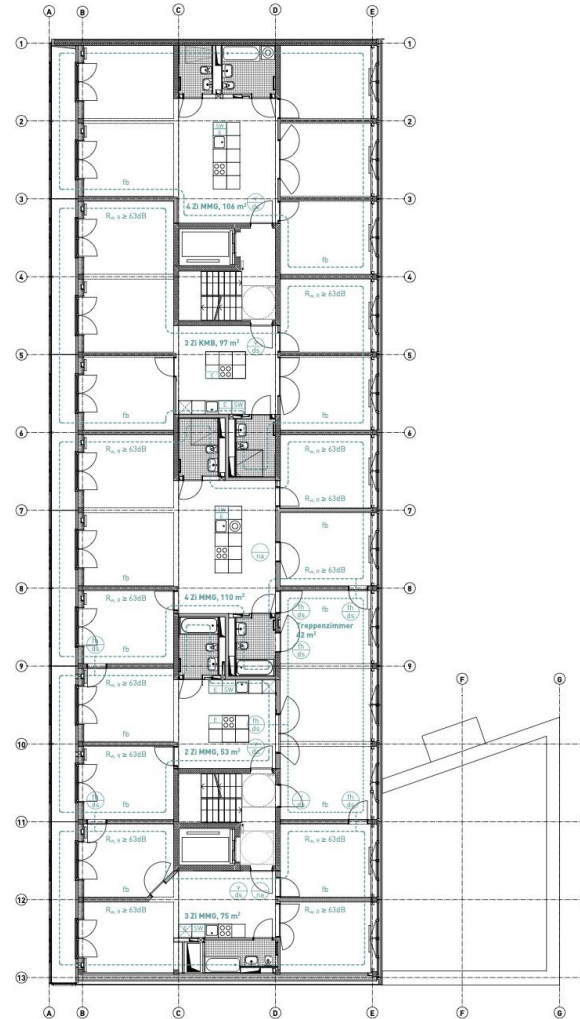
22|09|25



San Riemo Cooperative Housing, Munich, Germany [2017-2020]

Arge Summacumfemmer Büro Juliane Greb

Fostering Conviviality  
Splitting Up the Shared Program  
Creating Gathering Networks  
Maximising Indeterminacy  
Removing Corridors  
Sharing the Exterior  
Yielding Privacy



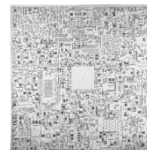
PROJETO V FA\_Ulisboa

22|09|25

San Riemo Cooperative Housing, Munich, Germany [2017-2020]

Arge Summacumfemmer Büro Juliane Greb

Fostering Conviviality  
Splitting Up the Shared Program  
Creating Gathering Networks  
Maximising Indeterminacy  
Removing Corridors  
Sharing the Exterior  
Yielding Privacy



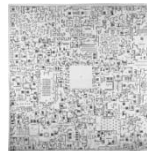
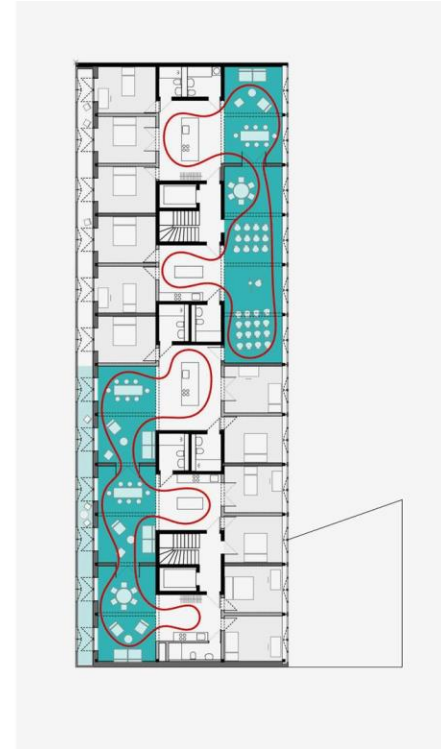
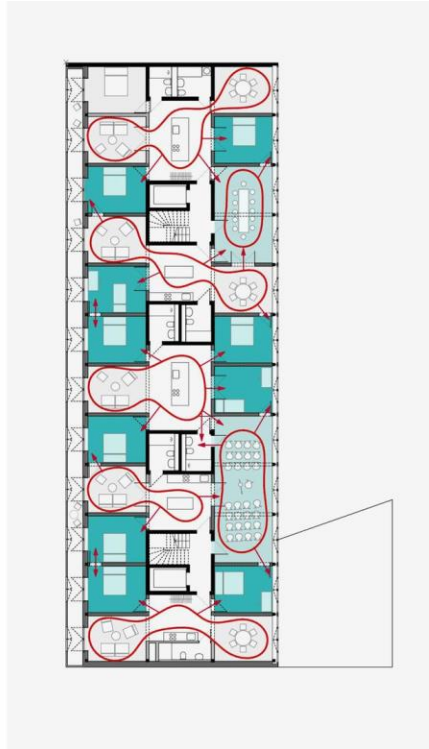
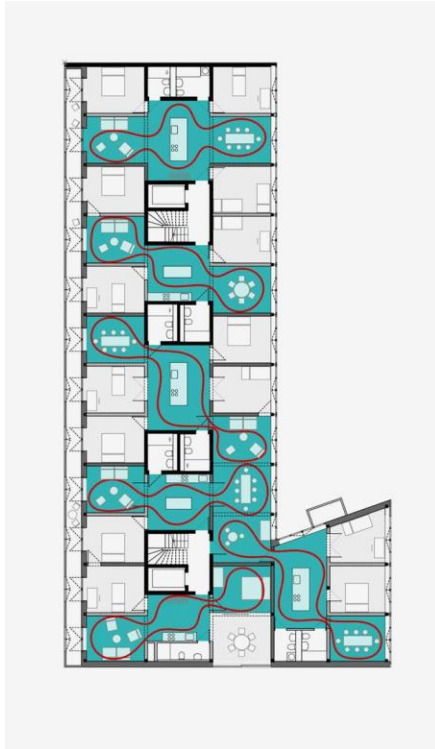
PROJETO V FA\_Ulisboa

22|09|25

San Riemo Cooperative Housing, Munich, Germany [2017-2020]

Arge Summacumfemmer Büro Juliane Greb

Fostering Conviviality  
Splitting Up the Shared Program  
Creating Gathering Networks  
Maximising Indeterminacy  
Removing Corridors  
Sharing the Exterior  
Yielding Privacy

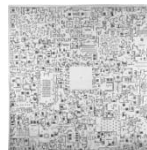




San Riemo Cooperative Housing, Munich, Germany [2017-2020]

Arge Summacumfemmer Büro Juliane Greb

Fostering Conviviality  
Splitting Up the Shared Program  
Creating Gathering Networks  
Maximising Indeterminacy  
Removing Corridors  
Sharing the Exterior  
Yielding Privacy



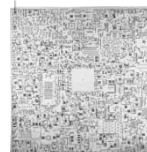
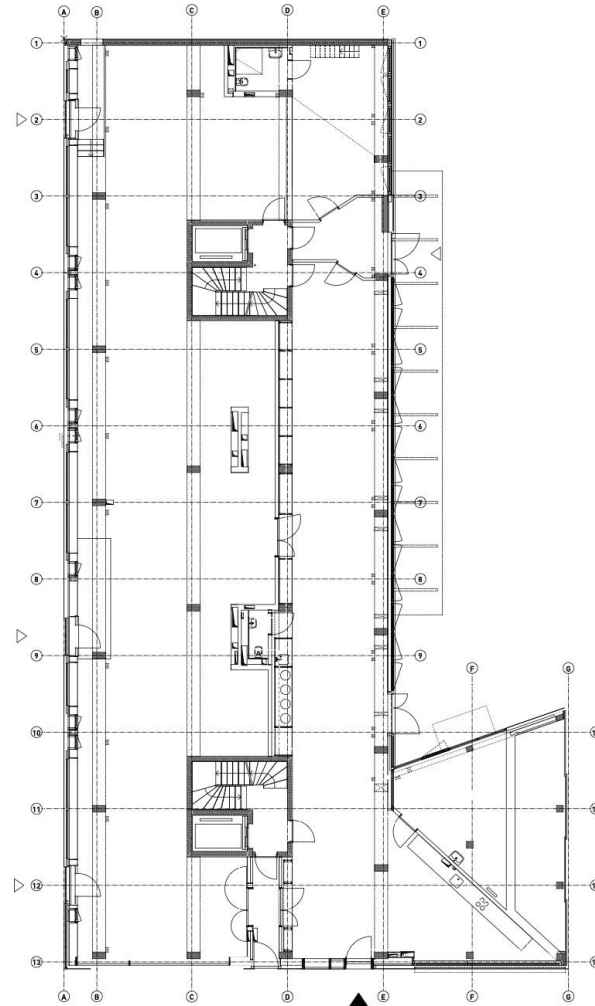
PROJETO V FA\_Ulisboa

22|09|25

San Riemo Cooperative Housing, Munich, Germany [2017-2020]

Arge Summacumfemmer Büro Juliane Greb

Fostering Conviviality  
Splitting Up the Shared Program  
Creating Gathering Networks  
Maximising Indeterminacy  
Removing Corridors  
Sharing the Exterior  
Yielding Privacy



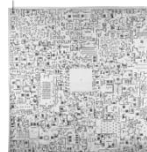
PROJETO V FA\_Ulisboa

22|09|25

Maison Commune, Pantin, France [2021-2023]

Plan Común

Fostering Conviviality  
Splitting Up the Shared Program  
Creating Gathering Networks  
Maximising Indeterminacy  
Removing Corridors  
Sharing the Exterior  
Yielding Privacy



PROJETO V FA\_Ulisboa

22|09|25



Maison Commune, Pantin, France [2021-2023]

Plan Común

Fostering Conviviality  
Splitting Up the Shared Program  
Creating Gathering Networks  
Maximising Indeterminacy  
Removing Corridors  
Sharing the Exterior  
Yielding Privacy



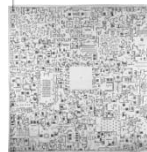
PROJETO V FA\_Ulisboa

22|09|25

Maison Commune, Pantin, France [2021-2023]

Plan Común

Fostering Conviviality  
Splitting Up the Shared Program  
Creating Gathering Networks  
Maximising Indeterminacy  
Removing Corridors  
Sharing the Exterior  
Yielding Privacy



PROJETO V FA\_Ulisboa

22|09|25



La Borda Cooperative Housing, Barcelona, Spain [2014-2018]

Lacol and the users

Fostering Conviviality

Splitting Up the Shared Program

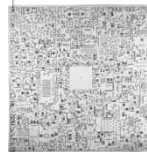
Creating Gathering Networks

Maximising Indeterminacy

Removing Corridors

Sharing the Exterior

Yielding Privacy



PROJETO V FA\_Ulisboa

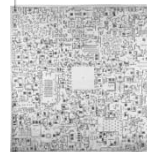
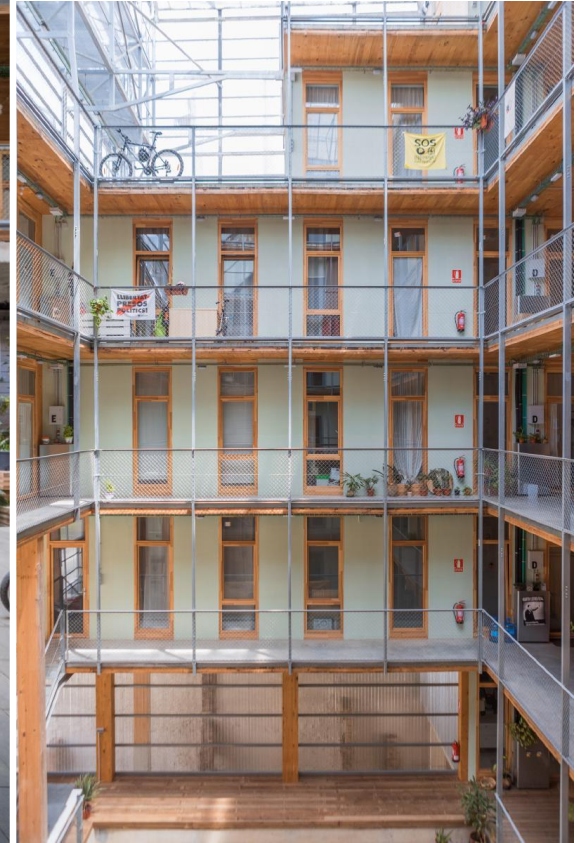
22|09|25



La Borda Cooperative Housing, Barcelona, Spain [2014-2018]

Lacol and the users

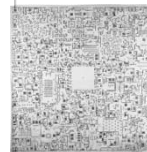
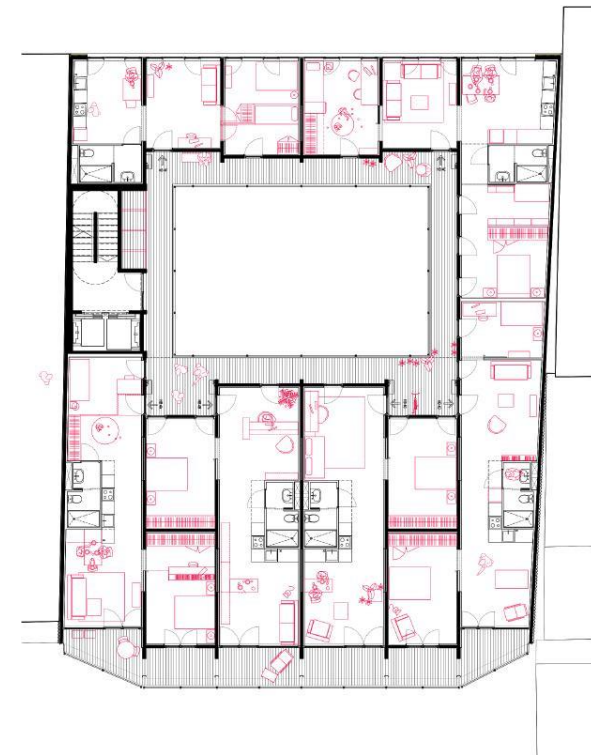
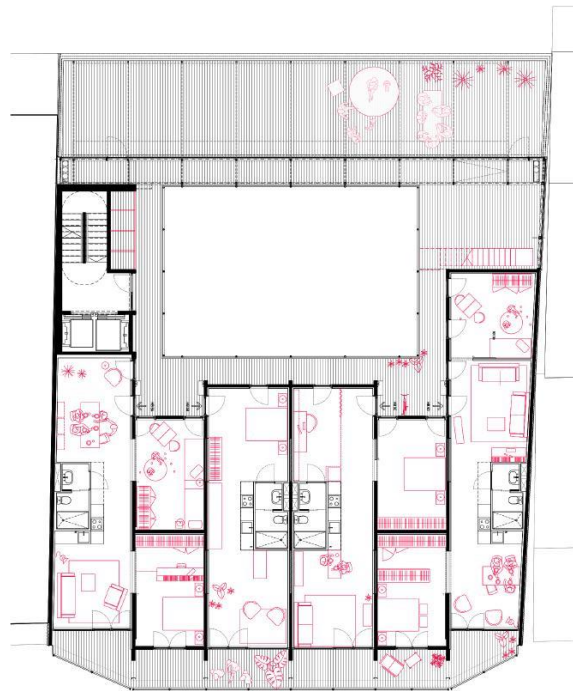
Fostering Conviviality  
Splitting Up the Shared Program  
Creating Gathering Networks  
Maximising Indeterminacy  
Removing Corridors  
Sharing the Exterior  
Yielding Privacy



La Borda Cooperative Housing, Barcelona, Spain [2014-2018]

Lacol and the users

Fostering Conviviality  
Splitting Up the Shared Program  
Creating Gathering Networks  
Maximising Indeterminacy  
Removing Corridors  
Sharing the Exterior  
Yielding Privacy



PROJETO V FA\_Ulisboa

22|09|25



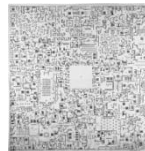
More than Living, Zurich, Switzerland [2009-2015]

Duplex Architekten

Fostering Conviviality  
Splitting Up the Shared Program  
Creating Gathering Networks  
Maximising Indeterminacy  
Removing Corridors  
Sharing the Exterior  
Yielding Privacy



0 5 10m



PROJETO V FA\_Ulisboa

22|09|25



# “WHAT’S A HOUSE?”

Housing Design Strategies, Today

## The Indeterminacy of the Floor Plan

Expanding the Limits of the Interior

Dual Access

Multiple Thresholds

*The House With  
Equal-sized  
Rooms, Xavier  
Monteys*

Removing Corridors

Maximising  
Indeterminacy

Making Visible the Community

## The Challenge of Privacy in Collective Housing

Creating Gathering Networks

De-Hierarchizing the Floor  
Plan

Splitting Up the  
Shared Program

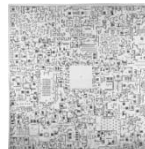
Diversifying Circulation

Functional  
Ambiguity

Built-In Flexibility

Fostering Conviviality

## The Communality of the Floor Plan



PROJETO V FA\_Ulisboa

22|09|25